

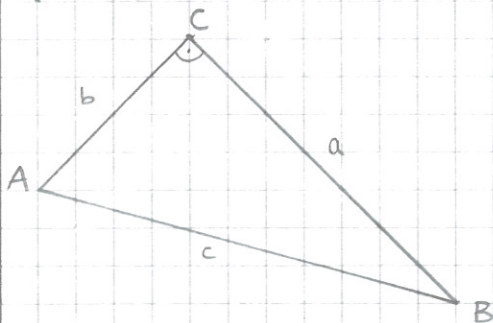
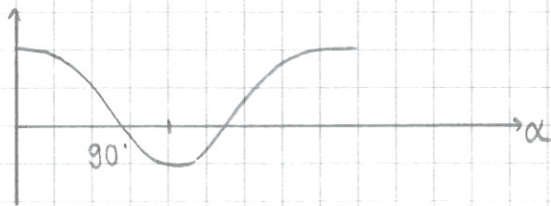
Zum Stundenprotokoll vom Donnerstag dem 08.05.2014Einschübe:

$$\cos(\angle \vec{a} \cdot \vec{b}) = \frac{\vec{a} \cdot \vec{b}}{\|\vec{a}\| \cdot \|\vec{b}\|}$$

$$\|\vec{a}\| = \sqrt{\vec{a} \cdot \vec{a}}$$

$$\cos(0^\circ) = 1$$

$$\cos(90^\circ) = 0$$



$$\cos \alpha = b/c$$

$$\sin \alpha = a/c$$

$$\tan \alpha = a/b$$